



04 October 2025

Information Update No. 2

Greetby Hill, Ormskirk
Lancashire L39 2DP
Tel: (01695) 574027
www.ormskirk-ce.lancs.sch.uk

Head Teacher: Mr G. Storch
email: head@ormskirk-ce.lancs.sch.uk

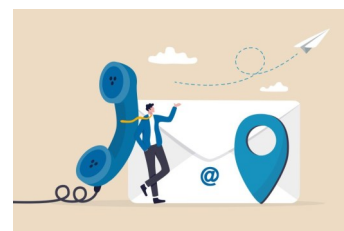
UPCOMING EVENTS:

- > **Tuesday 7th October**
Netball tournament
Burscough Priory
- > **Wednesday 8th October**
Y3 Local History walk
- > **Friday 10th October**
6H class worship at
9:00am – Parents
welcome
- > **Thursday 16th October**
Year 5 Visit to Edge Hill
- > **Friday 17th October**
6W class worship at
9:00am – Parents
welcome
- > **Friday 17th October**
Y5/6 Girls Rugby festival
- > **Tuesday 21st October**
Y4 Trip to White Scar
Caves and Clapham
- > **Wednesday 22nd October**
Flu vaccinations
- > **Friday 24th October**
Harvest Church service
lead by Year 2 in Ormskirk
Parish Church (for Y 1-6) -
Parents welcome to
attend
- > **Monday 27th - Friday 31th
October**
School Holidays
- > **Monday 3rd November**
School Re-opens
- > **Friday 14th November**
All day BOOK Sale
- > **Monday 17th November**
Parents' Evening
- > **Wed 19th November**
Parents' Evening

STAYING IN TOUCH WITH SCHOOL

For the attention of all families, including those who have joined us this year – please see below the best ways to contact school depending on the nature of your query:

- **Anything short but urgent** – please ring the school.
- **Important but simple messages** – use [School Gateway](#).
- **Clubs, payments, etc.** – use [School Gateway](#).
- **Attendance** – use [School Gateway](#) (if your child is ill, remember to include their symptoms so we can monitor patterns, and always inform us if they have Chickenpox, Scarlet Fever, etc.).
- **Term-time holiday requests** – [email office and headteacher](#) (please make sure to read our [updated policy](#) on holiday leave on the school website).
- **Email should only be used for non-urgent communication.** If you put 'OCE' in the subject heading, it can help.



QUICK IMPORTANT REMINDERS

- Please **label ALL of your child's belongings** (uniform, coats, lunchboxes, water bottles etc.) so that any lost items can be returned to their owners.
- We are a **NUT-FREE school**. Do not send your children in with nuts or nut products for lunch or break times. We have several children with severe nut allergies in school.
- Please **remember to book school lunches in advance**, even for children entitled to Free School Meals. This ensures they receive their preferred meal and helps us plan accurately. Late bookings will incur a £1.00 surcharge, and **payments for pre-ordered meals cannot be refunded if cancelled** on the day, unless your child is absent due to illness.
- Please **do not park in the staff parking bays** when dropping children off in the morning. Also, never park across local driveways. If needed, you can use the free car park at Station Approach (just beyond the station).
- There is a **speed limit** on the main drive and Waterworks Road to safeguard parents and children. This also applies when dropping off for Breakfast Club and picking up from After School Club.
- **Smoking and vaping are strictly prohibited** on school grounds!
- Please **check your child's hair regularly** for head lice and treat if needed. Free treatments are available via The Care at The Chemist scheme. Keeping long hair tied up helps too.



Thank you for your cooperation!

SPORTS CLUBS

Mon 6 th Oct	Tue 7 th Oct	Wed 8 th Oct	Thu 9 th Oct	Fri 10 th Oct
Lunchtime				
Year 2-6 Taekwondo *	Year 3-6 Cross Country	Mr P is using every Wed lunchtime (and sometimes Mon & Tue as well) to select and train children in preparation for inter-school sports teams (all relevant sports)	Year 4 Netball 12:00 - 12:35	Year 5-6 Netball 12:00 - 12:35
After school				
Football Club ** 15:30 – 16:30	Year 1-2 Infant Dance Club	Year 1-2 Dodge & Dance	Tennis Club 15:30 - 16:15	Year 1-6 Netball Squad Development 15:30 - 16:30
Taekwondo * 17:30 – 18:30				

* **Taekwondo** is paid for a session at a time. Just send your child in with £5 each week. This is held in the gym.

Eddie also runs Taekwondo in sessions on Monday 5:30 – 6:30 pm. These are family sessions with children and family members welcome. The price is £7 per session.

** **Football club** for boys and girls Year 1-6 (with Active Sports, £6 per session).

Children should get changed at break and meet in the cloakroom at lunchtime for **Cross Country**.

FURTHER INFORMATION

Please see below for information about applying for primary and secondary school places.

Online applications are already open. Don't leave applying until the last minute!

SCHOOL ADMISSIONS PRIMARY



APPLY NOW!

at lancashire.gov.uk/schools

School and Academy places September 2026

You must apply if your child has a 4th birthday between 1 September 2025 and 31 August 2026.

You must apply even if an older brother or sister is already at the school, or the school is linked to your child's nursery.

If you're a non-Lancashire resident apply through your own local authority.

Please read the admission criteria for your chosen schools on the website or get a copy from them.

CLOSING DATE

15 January 2026

lancashire.gov.uk

>>>>



School transport

>>>>

>>>>

If travel cost is an important factor in your school preference, search 'school transport' at lancashire.gov.uk or scan the QR code.



SCHOOL ADMISSIONS SECONDARY



APPLY NOW!

at lancashire.gov.uk/schools

School and Academy places September 2026

You must apply if your child is in their last year of primary school (year 6) from September 2025.

You must apply even if an older brother or sister is already at the school.

If you're a non-Lancashire resident apply through your own local authority.

Please read the admission criteria for your chosen schools on the website or get a copy from them.

CLOSING DATE

31 October 2025

lancashire.gov.uk

>>>>



School transport

>>>>

>>>>

If travel cost is an important factor in your school preference, search 'school transport' at lancashire.gov.uk or scan the QR code.



FURTHER INFORMATION

Our Shop Smart continues to be a wonderful way for families to purchase good-quality pre-loved (and sometimes brand-new!) uniform and other items. This back-to-school period has been our busiest yet, and it's all been worth it – the running total has now passed £2,500, and Shop Smart is supporting more families than ever. Thank you for your help!

SHOP SMART

500 donated

£2500 of library books to date

350 lost property

850 items Jul-Sept

Thank you for helping to keep Shop Smart and our library full!

FAMILY HUB DROP IN

A monthly drop in where families can access information and advice on a range of issues including:

Housing, finance, education, adult mental health, children's emotional health & wellbeing, things to do, and much more

- 16th October
 - 13th November
 - 11th December
 - 22nd January
 - 19th February
 - 19th March
- 12.30-2.00pm



Hope St Café
Wheatsheaf Walk
Ormskirk
L39 2XA

Open Evening

Ormskirk School

Thursday 9th October 2025
4.30pm-7pm

Prospective students and their families are warmly invited to tour our school's outstanding facilities to meet our lovely staff and students and see why we are so proud of our school.

The Headteacher, Mr Burnham welcomes visits by appointment at other times for a tour of the school.

Tel: 01695 583040

www.ormskirk.lancs.sch.uk
enquiries@ormskirk.lancs.sch.uk

@ormskirkSchool @OrmskirkSchool

Re-scheduled Date
Thursday 9th October
4.30pm - 7pm
We look forward to see you

HALLOWEEN PARTY

You are invited to our

DJ - Costume Competition - Buffet - Drinks - Games - Spooky Stories - and much more...

Pop in or call to book!

31 OCTOBER
18:00-20:00

Toby Carvery Ormskirk
01695 579 755

£5pp Ages 3-12!